

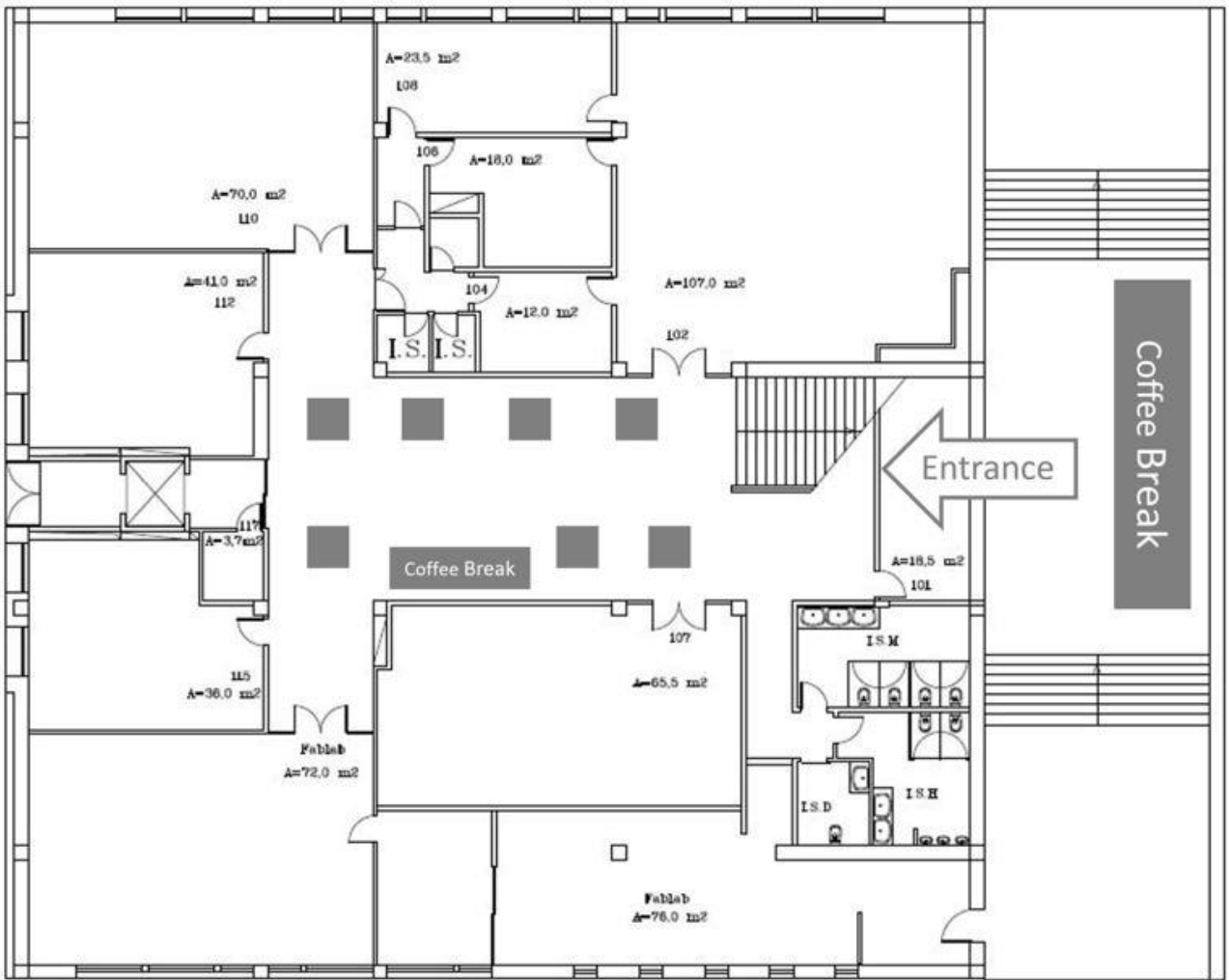
It is our honour to invite to partner with us the 28<sup>th</sup> International Liquid Crystal Conference - ILCC2022.

ILCC2022 will bring together scientists, both from academia and industry, targeting on Liquid Crystal applications, that expand from biomedicine to soft robotics and smart textiles. Recent conferences in this series were held in Kyoto (Japan) ILCC2018 (<http://ilcc2018.org>), and Kent (USA) ILCC2016 (<https://www.lcinet.kent.edu/conference/23/index.php>). On the basis of past experiences, we expect an attendance of approximately 600 to 700 delegates, mostly from Europe, north America, but also from Asia.

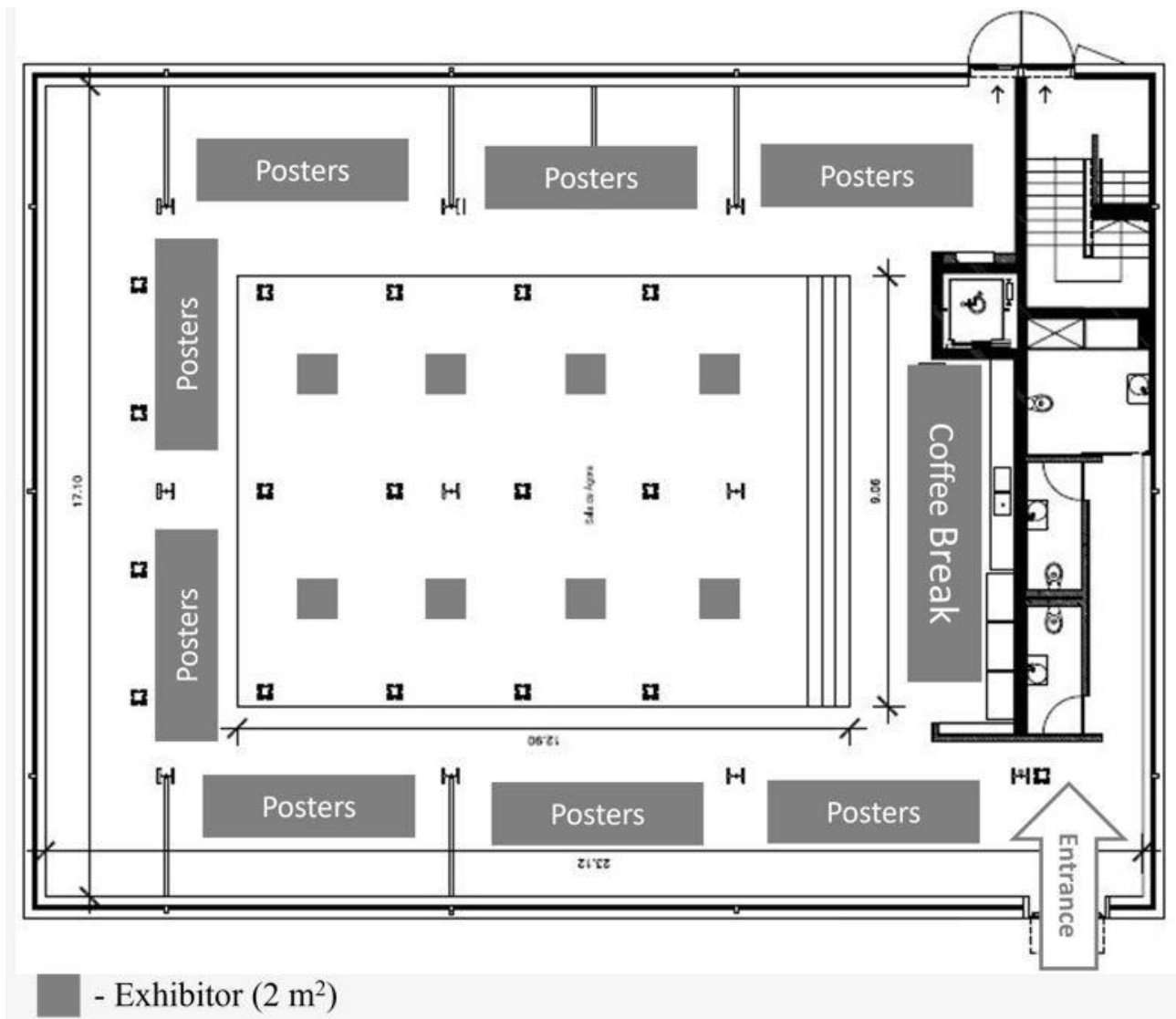
Your partnership could be a financial contribution, the funding of a social event, the supply of small items (e.g., bags, USB flash drive, etc.), or any other form you may suggest. Depending on the value of your contribution we will include your company's logo and a link to your website in the conference proceedings as well as on our website. Additionally, during the conference, we will distribute advertising materials from your company, that you provided.

We also invite you to exhibit your products at the conference on two different locations. The values presented below include the conference registration fee for one person, electricity, and wireless internet access.

- Building 4 - €650 for 1 m<sup>2</sup> (minimum 2 m<sup>2</sup> and maximum 6 m<sup>2</sup> per exhibitor, as space is limited).
- Ágora Room - €500 for each 1 m<sup>2</sup> floor space (minimum 2 m<sup>2</sup> and maximum 9 m<sup>2</sup> per exhibitor, as space is limited).



■ - Exhibitor (2 m<sup>2</sup>)



In case you require equipment and services, namely a stand, rental of furniture, hostesses, audio-visual equipment, computers, or other services, we can put you in contact with an experienced provider, but those costs are extra and have to be settled directly between the two companies.

Please feel free to contact us if you require any further information:  
[secretariat.ILCC2022@campus.fct.unl.pt](mailto:secretariat.ILCC2022@campus.fct.unl.pt)

We look forward for your participation in ILCC2022.